



Commercial Road, London, E14

BUTLER & STAG





**Guide Price £325,000-£350,000**  
**Nestled within the renowned Mission Building in Limehouse, this exceptional one-bedroom apartment combines historic charm with modern living. Boasting a spacious layout, the property is ideal for professionals or couples seeking a unique home with character.**



## Leasehold

- One Bedroom Apartment
- Close To Limehouse Station
- Chain Free
- Character Features Throughout
- The Historical Mission Building
- Lift Access
- Close To Amenities
- EWS1 Compliant

### Key Features:

**Generous Living Space:** An expansive open-plan living and dining area, perfect for relaxation or entertaining guests.

**Historic Charm:** Set in a beautifully preserved historic building, showcasing architectural features that exude character.

**Bright and Airy Bedroom:** A large double bedroom with natural light pouring in, offering a tranquil retreat.

**Prime Location:** Just moments away from Limehouse Station (DLR), providing excellent transport links to the City, Canary Wharf, and beyond.

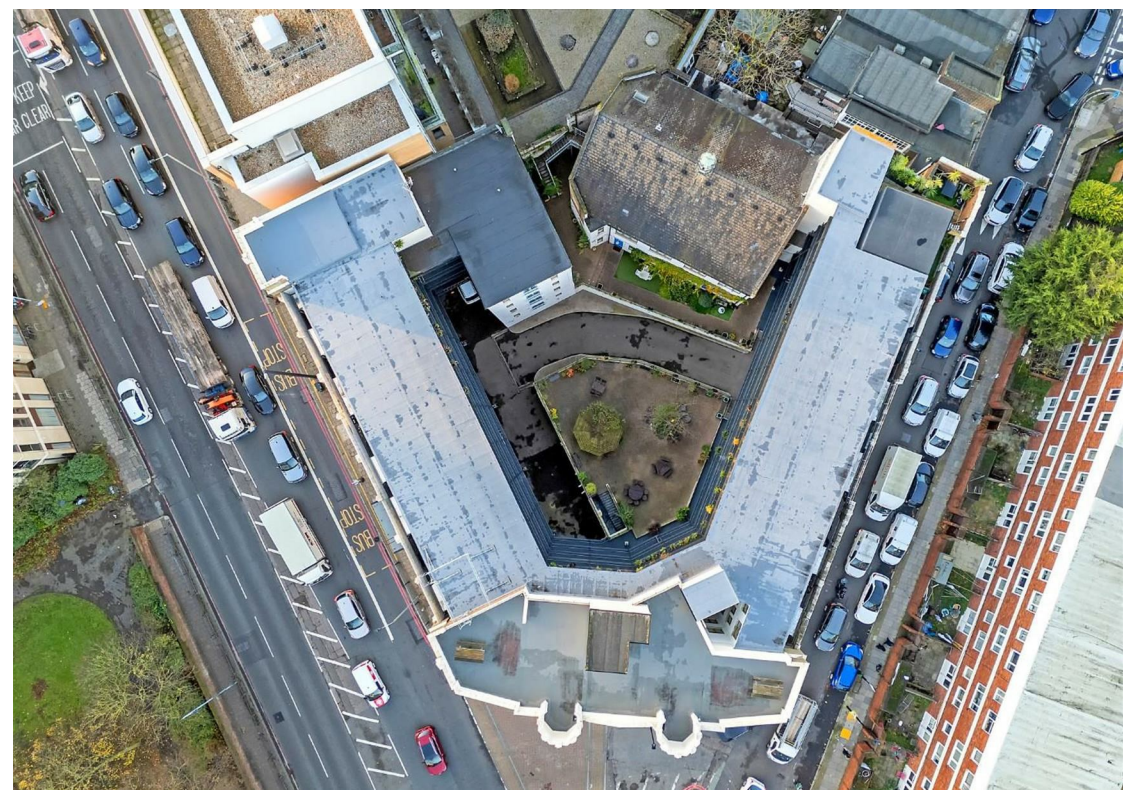
**Vibrant Locale:** Enjoy the charm of Limehouse, with its bustling marina, riverside walks, and a variety of cafes, restaurants, and shops.

With its blend of historic elegance and contemporary comfort, this apartment offers a rare opportunity to live in one of Limehouse's most coveted buildings.

Contact us today to arrange a viewing and discover the timeless appeal of this stunning home.





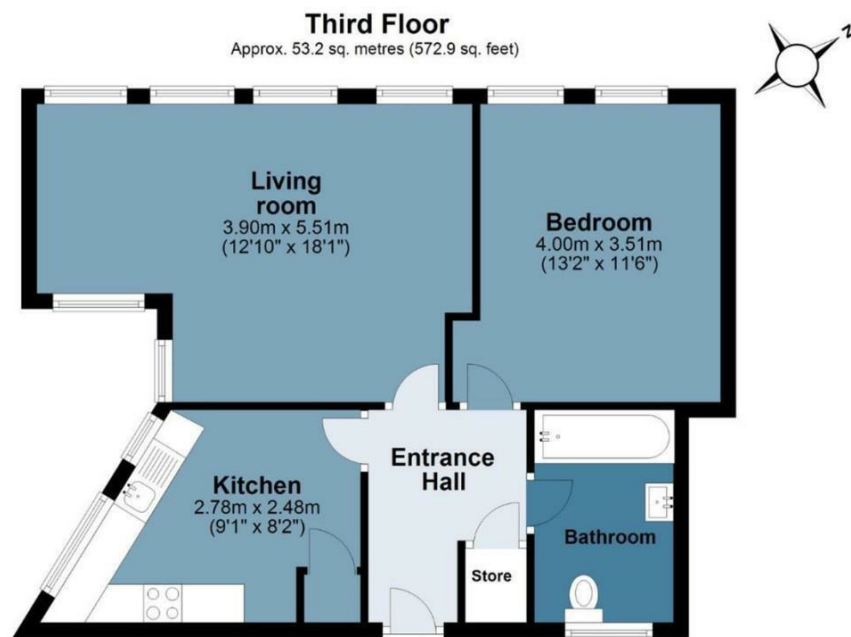




## The Mission Building

Approx. Gross Internal Area 53.2 Sq M ( 572.9 Sq Ft )

BUTLER & STAG



Measurements are approximate and for illustration purposes only. While we do not doubt the accuracy and completeness, we advise you conduct a careful independent assessment of the property to determine monetary value.  
© @modephoto.uk www.modephoto.co.uk

IMPORTANT NOTICE - These particulars have been prepared in good faith and they are not intended to constitute part of an offer or contract. We have not performed a structural survey on this property and the services, appliances and specific fittings have not been tested. All photographs, measurements, floor plans and distances referred to are given as a guide and should not be relied upon.

BUTLER & STAG

☎ 020 8102 1236

🏠 508 Roman Road, Bow, London, E3 5LU

✉ bow@butlerandstag.com

[www.butlerandstag.uk](http://www.butlerandstag.uk)